

STEALTH • COM

a  spartan company



History

For over 25 years Stealth.com (Stealth Computer) has been designing and manufacturing high performance, ruggedized, industrial-grade computer systems and peripherals.

Stealth continues to deliver innovative products that meet the tough and exacting needs of premium clients around the globe.

1990

Founded as
Stealth Computer
Corporation

2009

Stealth Computer
rebrands as
Stealth.com

2015

Acquired by Sparton
Corporation

Where we operate

Over **25** years of developing & configuring computers, displays & peripherals for the industrial market.

OUR FACILITY

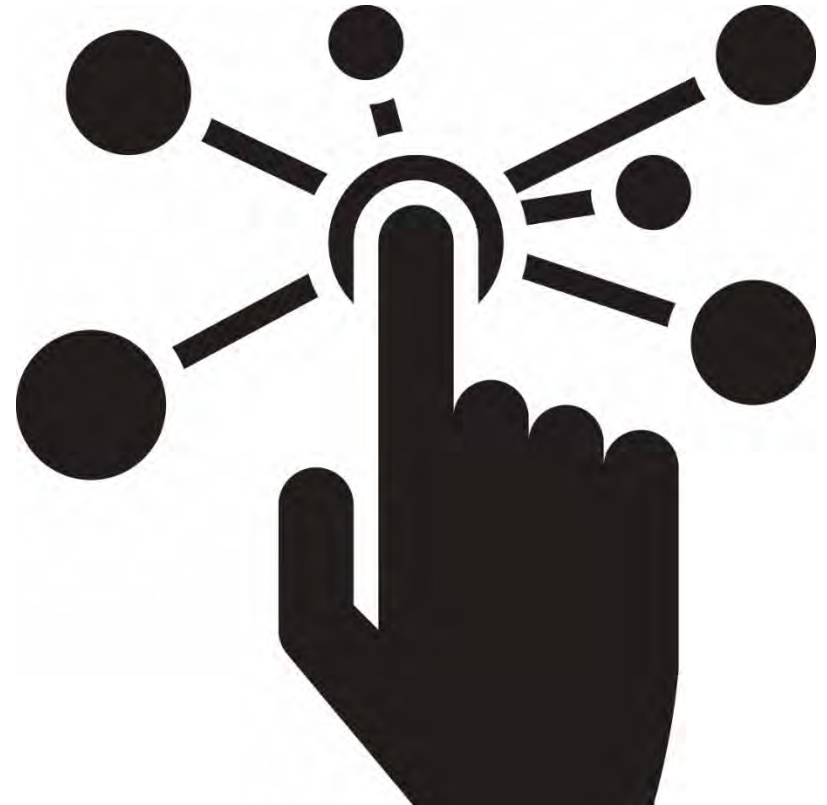
- Manufacturing Facility (21,000 sq. ft.)
- Class 7 and ISO certified Clean Room (560 sq. ft.)



What makes us different

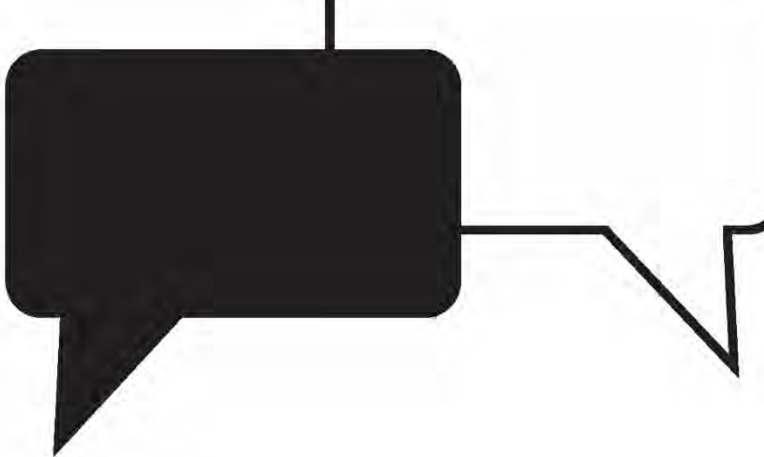
PRODUCT OFFERING

- One-stop shop offering a full solution of ruggedized PCs, displays & peripherals.
- We offer an interactive web experience from sales to support
- All models are fully configurable online with an abundance of options to choose from
- Fast delivery with low lead times and same day shipping on popular products
- Long product life-cycles with final buys and end of life notifications

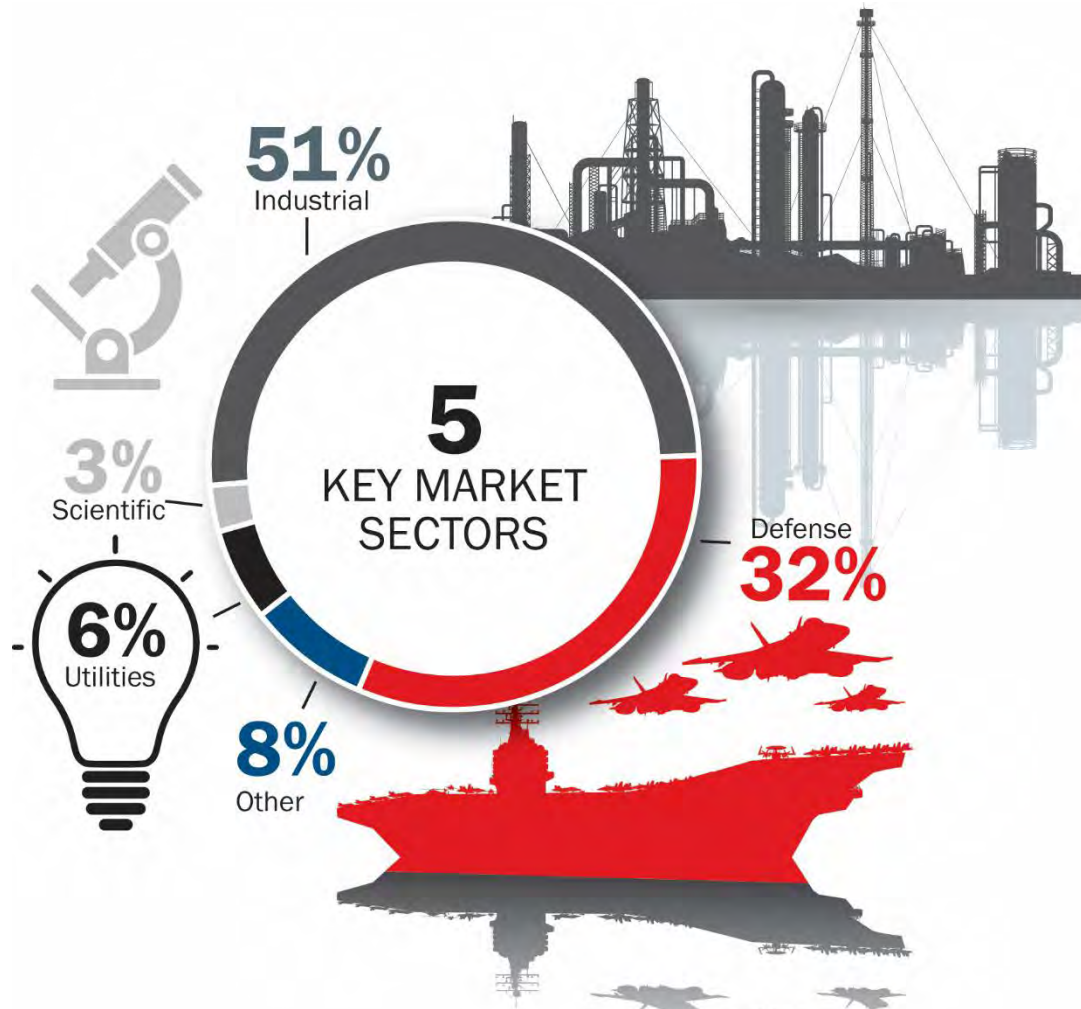


What makes us different

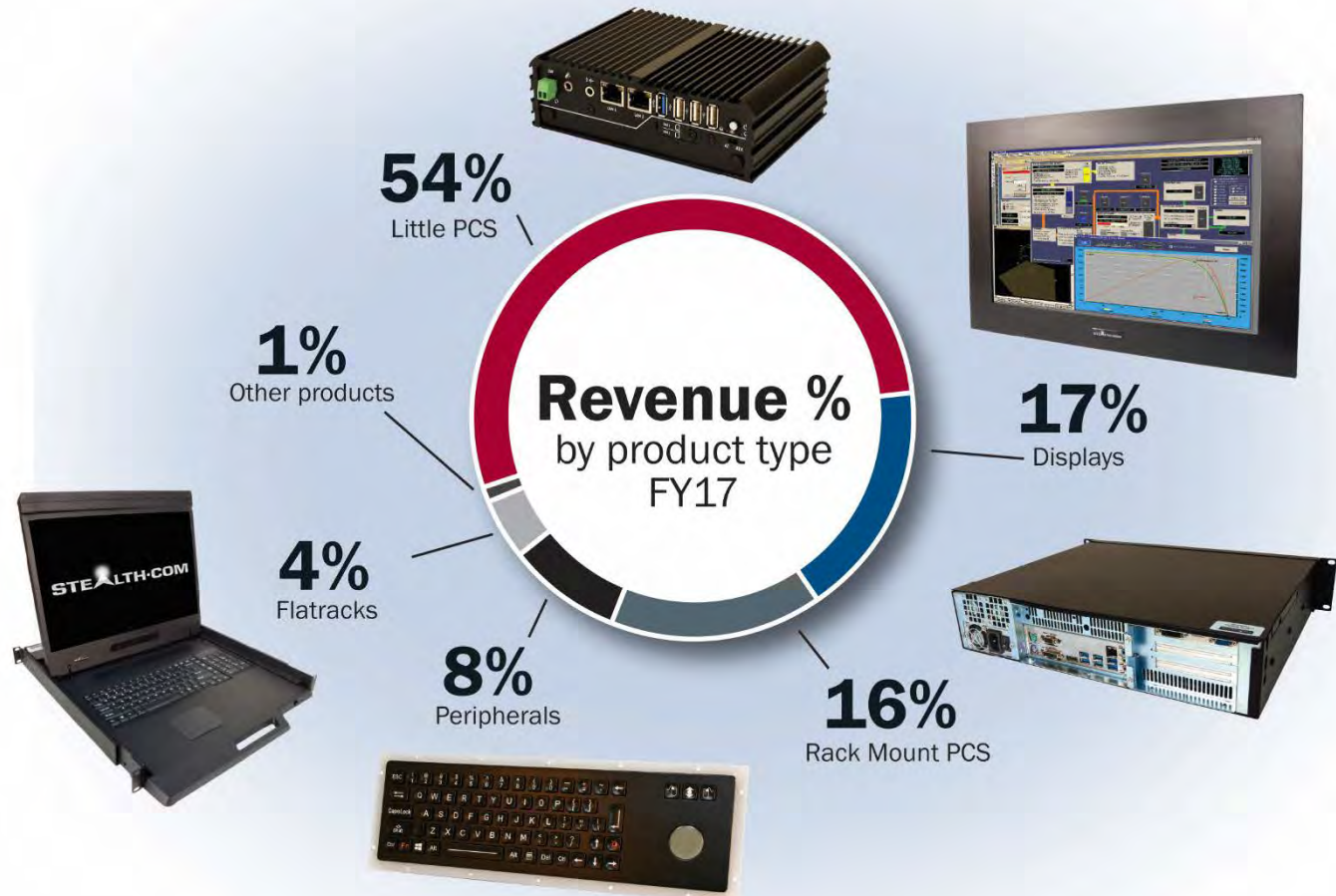
CUSTOMER SERVICE FOCUS

- 93% customer satisfaction rate with constant striving for perfection.
 - Award winning, superior performing products built under ISO 9001:2015 certified processes that demand the highest quality.
 - Product specialists available online and by phone to address requirements, provide recommendations or supply quotes
- 
- Easily contact our support team with product issues. They can help identify problems and provide solutions.

Key Markets



Product Sales



Little PCs / Mini PCs

Stealth.com is a leading manufacturer of ruggedized specialized Small Form Factor PCs.

Stealth's LittlePCs are Mini PCs designed to fit in space-confined areas and are ideal for demanding applications such as:

- Embedded Control
- IoT (Internet of Things)
- Digital Signs / Interactive Kiosks
- Thin-Clients
- Human/Machine Interface applications



Key Products

LPC-860

Fanless, Mini PC
with Dual Removable Drives

- No noise, rugged fanless chassis
- Powerful Intel 6th Gen Core i5 & i7 mobile processor
- 8x DIO ports
- 4K resolution, ultra HD, triple display support



Rugged Displays

Stealth's Rugged LCD Displays are designed for industrial and commercial applications.

Stealth's Displays come in a number of configurations including Panel mount, Rack mount, Open-Frame designs.

Key features include:

- Environmentally Sealed to NEMA/IP ratings
- Touch Screen
(Resistive, Capacitive or PCAP)
- 8.4" up to 24" diagonal sizes
- Sunlight Readable &
DC Power supply options
- Widescreen & Full HD models

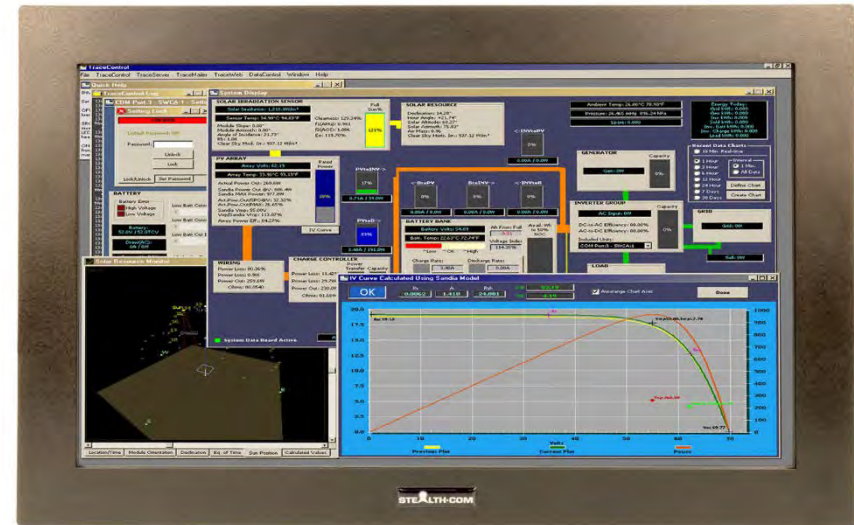


Key Products

SV-2400NL-PM

24" Panel Mount LCD Monitor

- NEMA 4/IP65 environmentally sealed
- Standard touch screen
- 1920x1200 maximum resolution
- Wide viewing angles



Rack Mount PCs & Servers

Stealth's Rack mount computer systems and servers are ideal for telecom, industrial control, plant automation, datacenters, ISPs, networking, machine vision, and data acquisition applications to name a few.

Key features include:

- 1U, 2U, 3U, 4U model sizes
- Fanless models (silent)
- Mass Storage / Multiple Drive options
- Expansion Slots (PCI/PCIe)
- DC Input & Redundant Power options
- Rigorous QA burn-in procedure
- Fully Custom Configurable



Key Products

SR-1515

High Performance 1U Rack Mount Server

- Slim space saving, 1.75" high
- Powerful single and dual Intel Xeon processors
- Removable SAS drives in RAID 1 or 0
- Solid state drive options
- Built to your exact specifications



Rugged Keyboards & Pointing Devices

Stealth's Industrial Keyboards and Pointing Devices are long lasting and stand up in environments where your typical office grade peripherals will not survive.

Ideal for HMI, operator interface, shop floor, data acquisition, IoT (Internet of Things), kiosks, medical carts, mobile mount, and outdoor use.

Key features include:

- Environmentally Sealed to NEMA/IP ratings
- Desktop, Panelmount, Rackmount or OEM / Open-Frame configurations
- USB or PS/2 connectors



Key Products

861-DP2-USB

Desktop Rugged Keyboard

- Rugged, Small Footprint
- Built-in Finger Tip Mouse
- NEMA 4, 4X/IP65 fully sealed
- Backlighting / Illumination
- Wide Temperature Range, -40 to +70C (-40 to 158F)



Rugged Portable PCs

Stealth's Rugged Mobile Portable Systems are designed for mission-critical applications that demand both high performance and extreme reliability in the harsh environmental conditions.

Key features include:

- Built-in Display (17" or 20")
- Powerful Intel Processors
- Expansion Slots (PCI/PCIe)
- Mass Storage / Multiple Drive options
- Rigorous QA burn-in procedure
- Fully Custom Configurable



Key Products

StealthBOX-Warrior-ATX-17.3

Ultra Rugged Multi-Slot Portable PC

- Rugged metal enclosure
- 17.3" full HD 1080p LCD screens
- Powerful Intel 6th Gen Core processors
- PCI/PCIe expansion slots
- Rugged detachable 108-button keyboard



Core Capabilities

Our highly-secure primary facility includes areas designated for:

- Production & Assembly
- Hardware Customization
- Systems Integration
- Service Support and Repair
- Demonstration Lab
- LCD Touchscreen Integration
- Engineering & R&D facilities



GLOBAL REACH

Stealth ships worldwide to over 82 countries.

Hardware Customization

WHY WE OFFER THIS

One of the keys to our success is having the flexibility to meet the exact needs of our customers, from one-off configurations to large production rollouts. Our customization allows not only hardware but branding add-ons. We are equipped to add custom colors, model and serial numbers – for your own asset tracking and control.

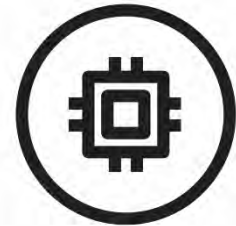
WE ARE KNOWN FOR:



Hardware integration



Software integrations &
out-of-the-box readiness



Third-party integration